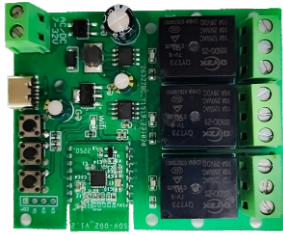


3路智能(蓝牙+WiFi)继电器模块

型号:AC/DC7-32V 点动/自锁/互锁开关



说明书|MANUAL

产品参数:

输入电压:AC/DC7-32V或 type-C5V
 最大功率:2200W/10A /每路
 总功率:16A 3500W
 无线频率:WiFi 2.4GHz b/g/n+蓝牙
 工作温度:-20°C ~ 70°C
 尺寸规格:59.3*72.3*19mm

使用该设备前请检查以下事项:

- 1.您的智能手机或平板已连接上一个能上网的2.4G WIFI(暂时不支持5G WIFI),手机开启蓝牙。
- 2.使用安卓系统的手机或平板,系统必须是4.0以上版本。
- 3.使用苹果手机或Pad时必须能够访问APP商店并下载APP。
- 4.如果您的无线路由器设置了MAC地址过滤请先进入路由器后关闭MAC过滤功

产品使用说明

- ①在各大应用市场搜索“易微联”下载安装。

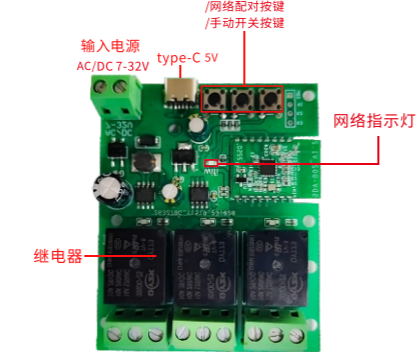


扫码下载“易微联”APP

产品接线:

- ②安装过程中如有提示权限请求请选择允许。
 - ③注册账号并登录易微联。
 - ④按照示意图正确接线。
 - ⑤完成接线后通电,设备默认来电为关,可以在APP更改设置为来电开或保持。
- 提示:由于易微联APP不断升级更新,实际操作可能与以上描述略有差异,请按照当前易微联APP内指引进行操作。
- 注:本设备的开关原理是通过控制电路火线的通断,从而实现电器工作和停止。

产品信息:



产品接线:



添加设备:

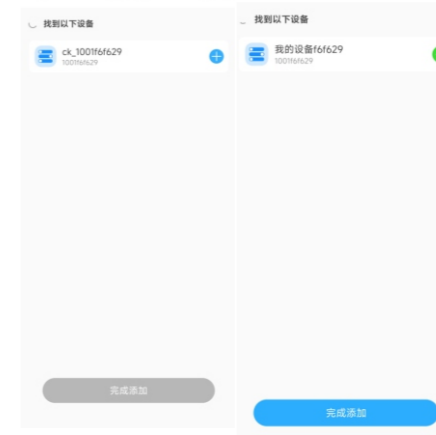
- ①重置设备
如果通电后,网络指示灯(红灯)已经是快闪状态(快闪2下停1下),跳此步骤。
- ②给设备通电
- ③长按网络配对键,保持5秒左右,至网络指示灯(红灯)快闪2下停1下,可进行易微联APP配网。

添加设备

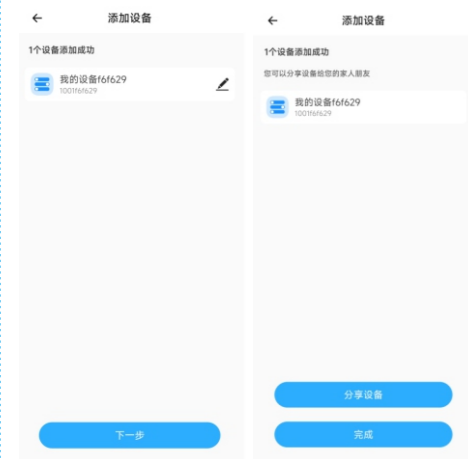


- ①打开易微联APP点击“+”进入添加设备页面。
- ②然后选择您的智能手机或平板已连接上一个能上网的2.4 G WIFI或者手动添加其他WIFI。
- ③再点击下一步。

添加设备



- ①点击“+”添加设备。
- ②根据您的网络状况,连接大约需要5-180秒内才能完成。
- ③点击完成添加。



- ①给设备命名。
- ②然后点击下一步。
- ③再点击完成,设备将显示在应用程序。

自锁/互锁/点动切换

- ①点击开关名字,进入设备界面。



- ②点击“...”进入设置。
- ③找到点动设置,点击进入点动设置。
- ④打开点动时间,设置好点动时间,点击保存。



- ⑤找到互锁设置,点击进入互锁设置。
- ⑥点击添加,然后设置一下所需要的通道,再点击保存

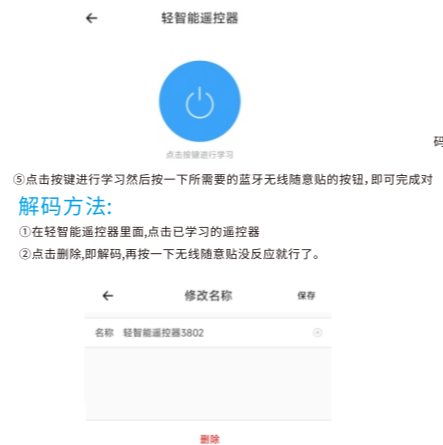


模块匹配无线随意贴:

- ①点击开关名字,进入设备界面。

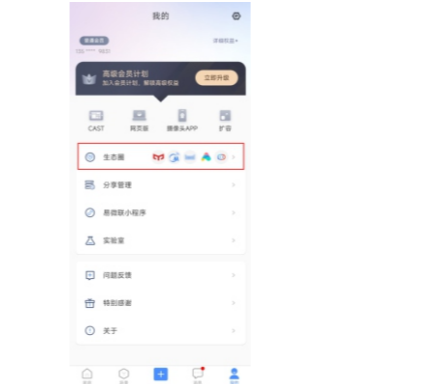


- ②点击“...”进入设置。
- ③找到轻智能遥控器。
- ④选择所需要配对的通道
- ⑤点击进入学习。



连接智能音箱

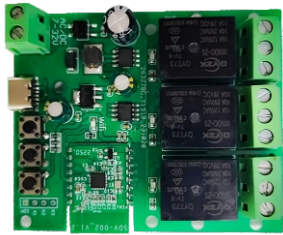
- ①点击界面右下“我的”
- ②找到生态圈,点击进入查看连接智能音箱教程。



常见问题产品配对失败、离线原因的解决方法:
 进入APP首页,点击界面右下“消息”图标,查看联网帮助。
 如果以上均尝试后也不能解决,请用另一部手机开启个人热点,尝试重新添加。

3-way intelligent (Bluetooth+WiFi) relay module

Model:AC/DC7-32V inching/self-locking /interlocking switch



MANUAL

Product parameters:

Input voltage: AC/DC7-32V or USB-5V
 Maximum power 2200W/10A /Each route
 Total power: 16A3500W
 Wireless frequency: WiFi 2.4GHz/g/n+Bluetooth
 Working temperature: 20 °C ~ 70 °C
 Size specifications: 59.3 * 72.3 * 19mm

Please check the following items before using this device:

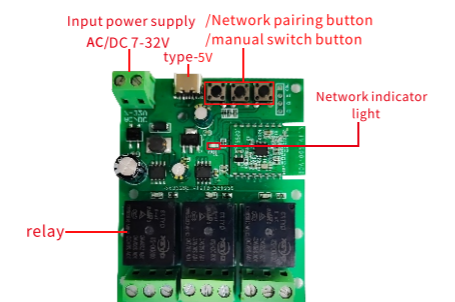
1. Your smartphone or tablet is connected to a 2.4G WIFI that can access the internet (5G WIFI is currently not supported).
2. Turn on Bluetooth on your phone.
3. For phones or tablets using the Android system, the system must be version 4.0 or higher.
4. You must be able to access the app store and download the app when using an Apple phone or iPad.
5. If your wireless router has set MAC address filtering, please enter the router background first to turn off MAC Filtering function.

Product instructions

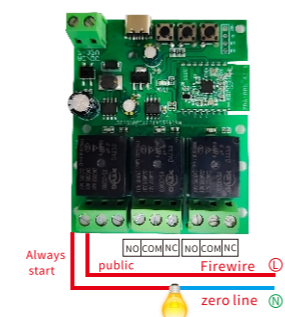
- ① Search for "Yiweilian" download and installation in major application markets.



- ② If there are permission requests during the installation process, please select Allow.
 - ③ Register an account and log in to Yiweilian.
 - ④ Connect the wires correctly according to the schematic diagram.
 - ⑤ Power on after completing the wiring. The device defaults to off for incoming calls and can be changed to on or off for incoming calls in the app.
- Tip: Due to the continuous upgrading and updating of the Yiweilian APP, the actual operation may differ slightly from the above description. Please follow the current instructions in the Yiweilian APP for operation.
- Note: The switching principle of this device is to control the on/off of the live wire in the circuit, thereby achieving the operation and stopping of the electrical appliance.

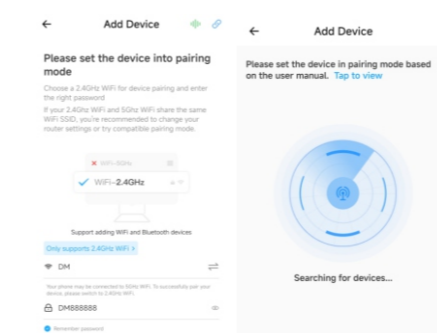


Product wiring:

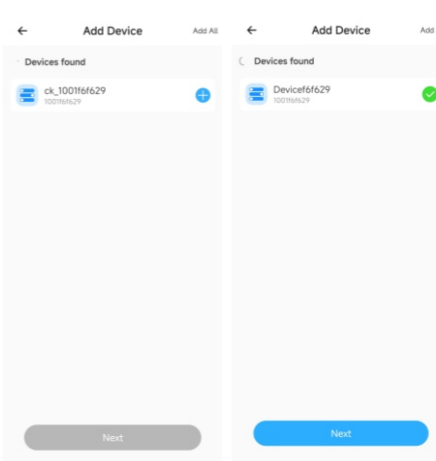


Add Device

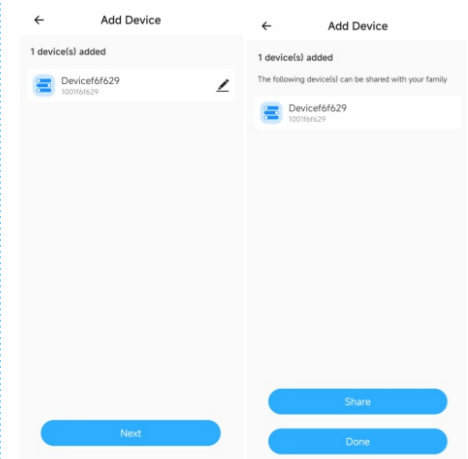
- ① Reset device
If the network indicator light (red light) is already flashing rapidly after power on (flashing 2 times and stopping 1 time), skip this step.
- ② Power on the device
- ③ Long press and hold the network pairing button for about 5 seconds until the network indicator light (red light) flashes twice and stops once to perform network configuration on the Yiweilian APP.



- ① Open the Yiweilian app and click "+" to enter the add device page.
- ② Then choose whether your smartphone or tablet is connected to a 24GW | F that can access the internet, or manually add another WIFI.
- ③ Click on Next again.



- ① Click "+" to add the device.
- ② According to your network condition, it will take approximately 5 to 180 seconds to complete the connection.
- ③ Click to complete the addition.



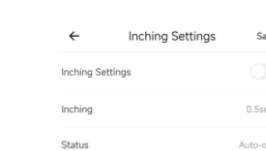
- ① Name the device.
- ② Then click on Next
- ③ Click Finish again and the device will be displayed in the application.

Self locking/jog switching

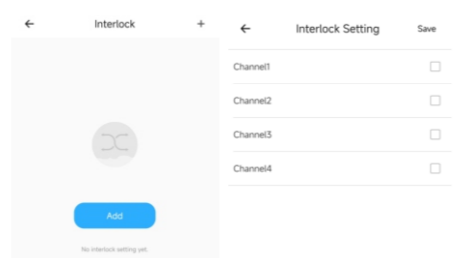
- ① Click on the switch name to enter the device interface.



- ② Click “...” to enter the settings.
- ③ Find the jog settings and click to enter the jog settings.
- ④ Open the jog time, set the jog time, and click Save.



- ⑤ Find the interlock settings and click to enter the interlock settings
- ⑥ Click Add, then set the required channel, and then click Save

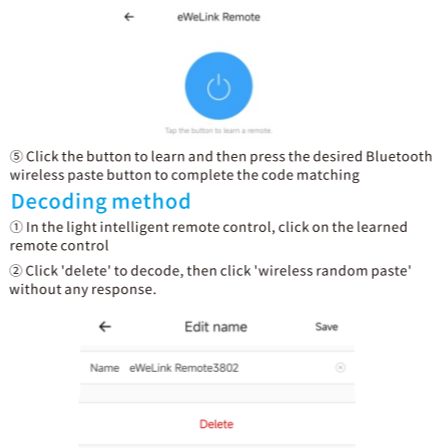


Module matching, wireless random pasting

- ① Click on the switch name to enter the device interface.

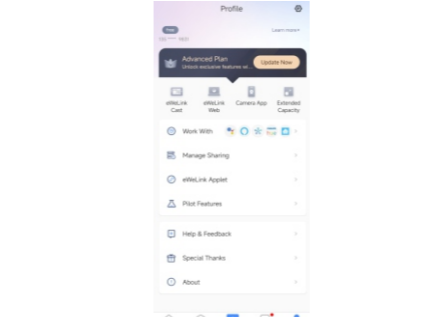


- ② Click “...” to enter the settings.
- ③ Find the light intelligent remote control.
- ④ Select the channel to be paired with
- ⑤ Open the jog time, set the jog time, and click Save.



Connect smart speakers

- ① Click on 'My' at the bottom right of the interface
- ② Find the ecosystem and click to view the tutorial with connecting smart speakers.



Solution to common problems of product pairing failure and offline reasons

Enter the homepage of the app, click on the "Message" icon at the bottom right of the interface to view online help.
 If the above attempts still fail to resolve the issue, please use another phone to open a personal hotspot and try adding it again.